



A presentation on the services of  
**ORBIT GRAPHICS**

ORBIT GRAPHICS

# Our team Skillsets

## Image Manipulation

Most of our professionals are highly efficient in image manipulation including Clipping Path, image masking, product image processing, image cleaning and cloning, etc.

## Low and High End Image Retouching

Our team are capable of providing complex retouching services like: glamour retouching, fashion retouching, image effects creation, etc.

## Digital Illustrations and Conversion

We also are capable of converting or illustrating vector images from raster copy.

## Creative Graphic Design

The creative graphic design services we provide are: Corporate Identity Design, Advertisement Design, Print Media Layout Design (Books, Magazines, Newspapers, Newsletters, etc.), Web Graphics, etc.

## Web Developers

Our web developers team are proficient in web media based languages like: PHP, Java, JavaScript, HTML, HTML5, XHTML, CSS3, etc.

## Customer Service and After Sales Support

We have a strong team of customer service operates 24/7, who are trained to communicate with the clients regarding any production related issues.

# Our team expertise

Our team are highly experienced on worldwide recognized software like:

Adobe Photoshop (all version)

Adobe InDesign (all version)

Adobe Illustrator (all version)

Other graphics related software's

Web design and Development

**Working Platforms:**



# Our Capacity

We believe in top notch quality with zero tolerance and also ensure the best turnaround time within our capacity. We have a very flexible capacity and firm plan for growth at any time. However, with firm support from our clients, we currently have the following capacity:

- 100 images per hour
- 2000 images per day
- 14000 images per week
- 60000 image per month

# Our services



## Image Editing

- Clipping Path or Silo or Silhouette/Background Removal
- Multiple Clipping or Color Paths
- Channel/Soft Masking /Layer Masking
- Photoshop Transparent/ Translucent Masking
- Image Shadowing (Drop, Natural & Reflective)
- HI-END Retouching & Restoration
- Jewelry & Beauty retouching
- Cropping / Sizing / Straightening
- Glamour Enhancement
- Photoshop Object Removing
- Image manipulation
- Raster to Vector

# Our Workflow

**Step 1:** Clients upload their files on our FTP server/ wetransfer/ dropbox/mail.

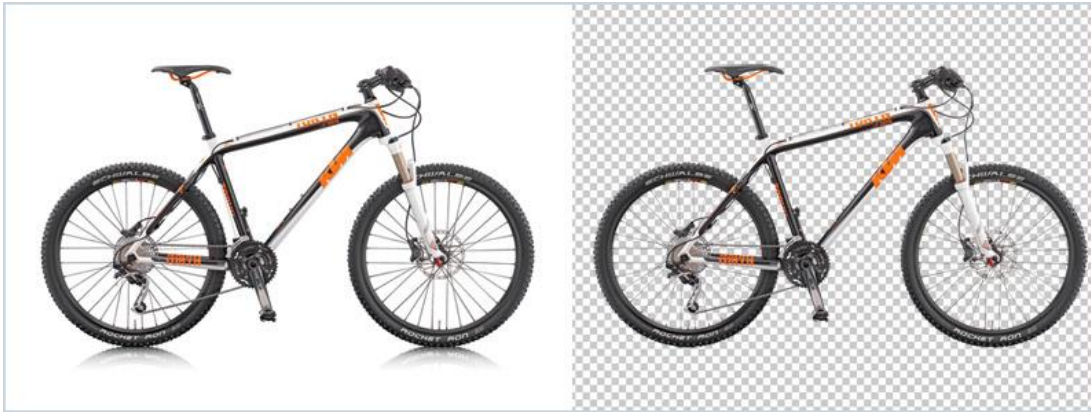
**Step 2:** We download the files and start working on the files.

**Step 3:** We finished the files within the stipulated time and send the files for QC.

**Step 4:** After the QC is done the files are uploaded.

**Step 5:** Clients download the files.

# Image Editing



Clipping Path/Silo



# Image Editing



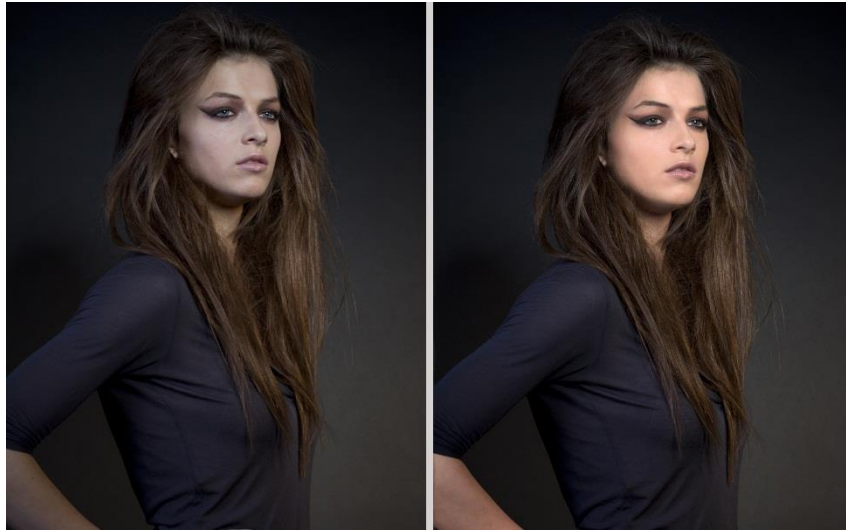
Skin Tone Retouching

Glomom Retouching





# Image Editing



Skin Tone Retouching

Glomom Retouching



# Image Editing



Reflective Shadow

Drop Shadow



# Image Editing



Neck Joint

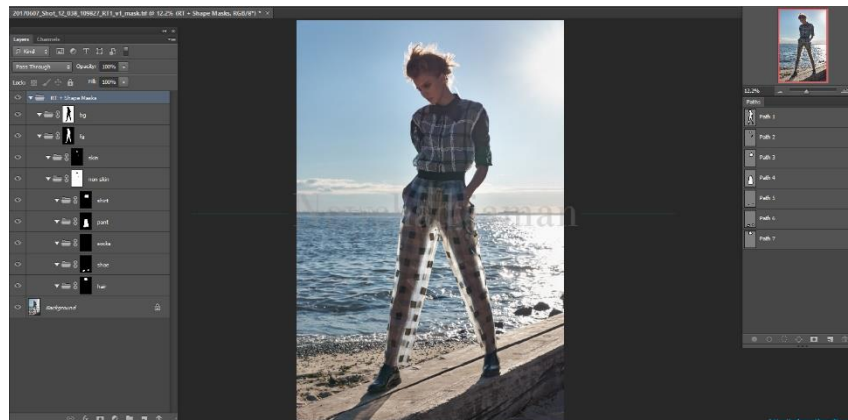


# Image Editing



Channel Masking

Layer Masking



# Image Editing

## Background Remove And Color Correction



Color Correction



# Image Editing

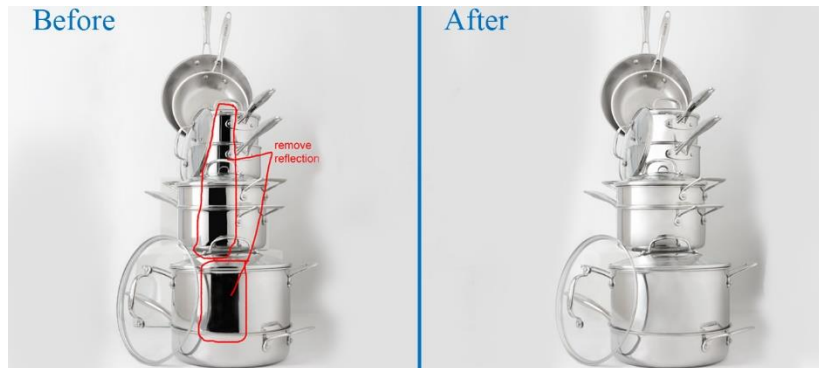


Image retouching



# Vector art

BEFORE

AFTER



BEFORE

AFTER



Image retouching

# Infrastructure

## Hardware

- We have latest configured PC for graphics design and image editing solutions.
- We have 20 Windows desktop. We have Cumulative Licensing Program (CLP) for all of our PCs.
- To secure image and information to leak, all of our PC connections are protected by firewall. USB flash or DVD drive using to any computer is strictly restricted.



# IT Facilities



## Software

We have customized Photoshop QC Tool, which checks and resolves the following issues:

1. Extra path (the software will detect and mark any extra path by a red circle).
2. Open path (the software will detect and mark any open path by a red circle).
3. Extra/Unwanted anchor point (the software will detect any extra/unwanted anchor point and mark it by a red circle).
4. Out of canvas anchor point/open path - detects and gives x/y axis value to find the point.

# Advantages of Our team

- Scalable and Flexible Production Capacity
- Highly professional graphic designers and manipulators that understand customer tastes.
- Ability to work around the clock and ensure 24/7 production,
- Provide the best quality at the rock bottom price, without compromising the quality.
- 24 hours standard turnaround time.
- All finished jobs are re-checked and pass strict quality control parameters before delivery.
- OGL maintains prompt communication with the clients. Average email responding time is 10 minutes
- Strict confidentiality is maintained regarding any client related issue.

**PROFESSIONAL**



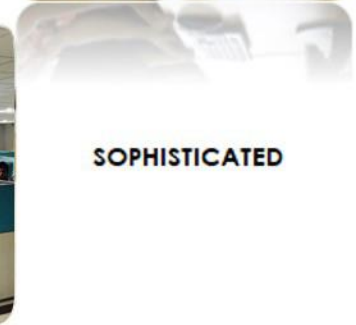
**DYNAMIC**



**RELIABLE**



**SOPHISTICATED**



**CREATIVE**



**MODERN**



**GRAPHICS**

Thank A lot  
&  
Have a Nice Day!

